

INSTALLATION SETS DN 40

INSTALLATION SETS

- Quick and easy installation
- For single and duplex units
- Installation Set Extension DN 40 for duplex units
- No more thread cutting on the construction site
- Installation height of the pressure discharge flexibly adjusted
- High-quality materials
- Suitable for all sewage pumps of the MultiCut range



DESCRIPTION

Installation sets simplify the processes on building sites when pump stations have to be renovated or installed. The Installation Set DN 40 Single and the Installation Set Extension DN 40 Duo have been developed for single and duplex installations in concrete sumps. The sets are used to establish a connection between the pumps and the pressure pipe. In order to provide easy pump removal e.g. for maintenance, the pumps are installed with a guide rail system. This system is compatible with all models of the MultiCut range.

All required components are either already pre-assembled or at least in the scope of supply.

Time-consuming steps such as thread cutting or the procurement of additional components are no longer necessary. All components are in one or two packaging units and are made of high-quality materials to ensure a long life of the pumping station.

Please note that you need to order both the Installation Set DN 40 Single and the Installation Set Extension DN 40 Duo when you need the set for a duplex pump station.

INSTALLATION SETS DN 40

INSTALLATION SETS

SCOPE OF SUPPLY

Pre-assembled single unit: Stop valve (stainless steel 1.4408) with ball-type check valve plastic (GRP) with pressure pipe (stainless steel 1.4571), 960 mm and guide rail holder (stainless steel 1.4301)

Single: Duckfoot bend GR 35 grey cast iron, coupling claw GR 35 grey cast iron, pressure pipe (stainless steel 1.4571), 960 mm, 2 x grip clamp (stainless steel W5), guide rail (stainless steel 1.4541), 2 x approx. 1000 mm, pluggable, pressure pipe connection, (stainless steel 1.4541), 870 mm

Pre-assembled duplex unit: Stop valve (stainless steel 1.4408) with ball-type check valve plastic (GRP) with pressure pipe (stainless steel 1.4571), 960 mm and guide rail holder (stainless steel 1.4301)

Single: Duckfoot bend GR 35 grey cast iron, coupling claw GR 35 grey cast iron, pressure pipe (stainless steel 1.4571), 960 mm, 1 x grip clamp (stainless steel W5), guide rail (stainless steel 1.4541), 2 x approx. 1000 mm, pluggable, T-piece pressure pipe connection (stainless steel)

MECHANICAL DATA

Weight	28 kg
--------	-------

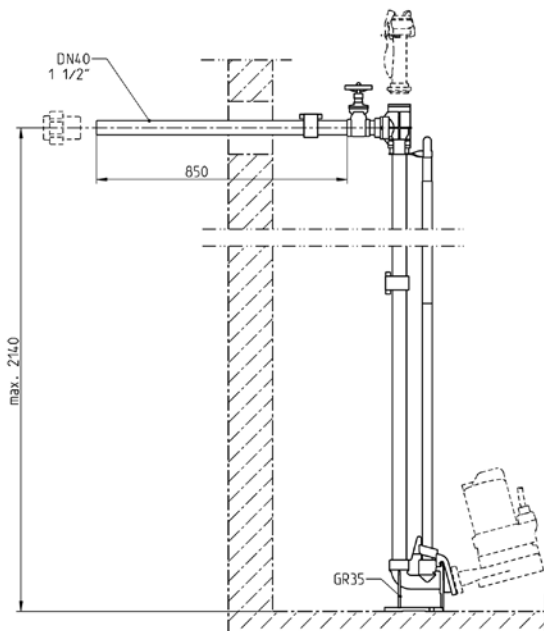
INSTALLATION SETS DN 40

Type	Code No.
Installation set DN 40 Single	JP50680
Installation Set Extension DN 40 Duo	JP50691

POSSIBLE PUMPS

Installation Sets DN 40	MultiCut 76/2+20/2 M	MultiCut 08/2 ME
MultiCut 20/2 M plus	MultiCut 25/2 ME	MultiCut 08/2 M
MultiCut 25/2 ME	MultiCut 35/2 M	MultiCut 08/2 M
MultiCut 35/2 M	MultiCut 36/2 M	MultiCut 08/2 MES
MultiCut 36/2 M	MultiCut 45/2 M	MultiCut 08/2 MS
MultiCut 45/2 M	MultiCut 75/2 M	
MultiCut 75/2 M	MultiCut 76/2 M	

Installation Set DN 40 Single



INSTALLATION SETS DN 40

INSTALLATION SETS

Installation Set Extension DN 40 Duo

