

# PLANCOFIX CONNECT

## FLOOR DRAINAGE PUMPS

- Flexible bathroom design with line and/or point drainage
- In combination with shower channels from DALLMER
- Wide range of shower drains
- Click-in seal collar (DIN 18534-konform)
- Installation depth 7,5 cm
- Quiet operation: 27 dB(A), fulfils sound protection according to DIN 4109
- Easy cleaning and maintenance



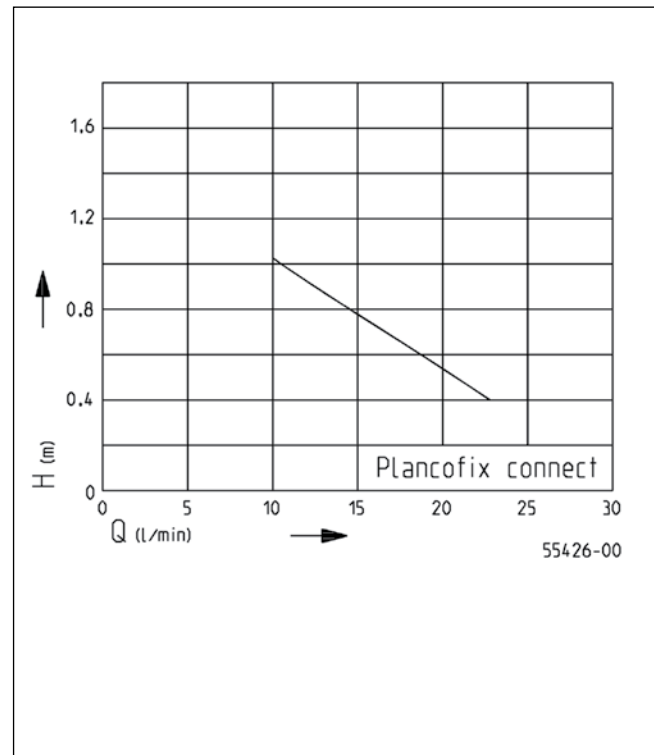
### DESCRIPTION

The Plancofix Connect is a VDE-tested floor drain pump that is installed with shower channels from DALLMER. With the Plancofix Connect it is possible to install ground level/low level showers even in places where it was previously not possible due to a lack of free fall. It must not be used for backwater protection.

Recessed into the screed, the Plancofix Connect forms the floor drain in tileable showers. The incoming water is pumped to the nearest gravity pipe via a 1" pressure pipe. The hand-over point to the gravity pipe should be 15 cm higher than the Plancofix.

The Plancofix Connect requires an installation depth of 7.5 cm including the insulation tray. Together with the DALLMER shower channels CeraWall Connect, CeraFloor Connect or CeraFrame Connect, the Plancofix Connect forms a safely functioning unit. In some countries these shower channels are distributed by HL Hutterer & Lechner GmbH.

### PERFORMANCE



Type	Delivery head H [m]	0.4	0.6	0.8	1
Plancofix Connect	Flow rate Q [l/min]	23	19	14	10

Specifications can be changed without notice. Performance subject to ISO 9906 tolerances.



# PLANCOFIX CONNECT

## FLOOR DRAINAGE PUMPS

### SCOPE OF SUPPLY

Ready-to-connect unit made of high-strength plastic, synchronous motor with non-blocking hydraulics, insulating tray for sound compensation, feet for height adjustment, sealing fleece for connection to the damp-proofing, installation aids and site

cover.

The shower channels CeraWall Connect, CeraFloor Connect or CeraFrame Connect from DALLMER are not included in the scope of delivery.

### MECHANICAL DATA

Pump	Horizontal, single-stage	Pressure outlet	1" IG
Mounted circuit	Yes	Weight	3.7 kg

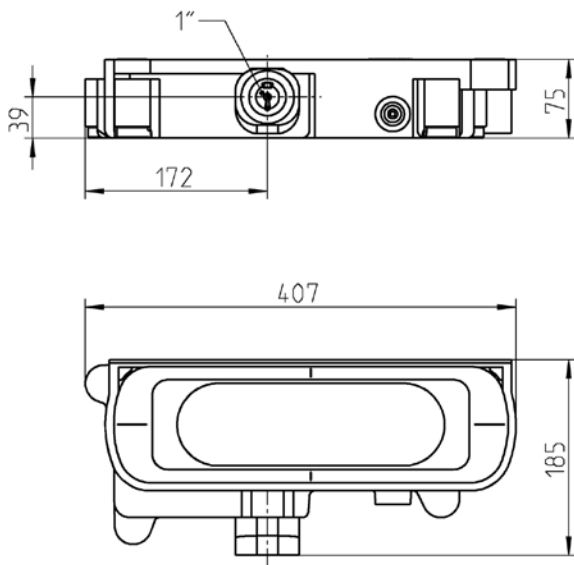
### ELECTRICAL DATA

Voltage	1/N/PE~230 V	Wires	3G0,75 GR
Motor rating P1	30 W	Winding thermostat	Yes
Current	0.2 A	Motor protection	Installed in the winding
Power line	5m H05VV-F	Plug	Without

### PLANCOFIX CONNECT

Type	Code No.
Plancofix Connect	JP50319

### Dimensions Plancofix Connect (mm)



55153-00

### Performance

